



Port of HaminaKotka Ltd
Service charges 2023

PORT OF HAMINAKOTKA LTD, SERVICE CHARGES 2023

PORT DUES ON GOODS	p. 3
PORT DUES ON VESSELS	p. 6
PORT DUES ON PASSENGERS	p. 8
PORT DUES ON WASTE DISPOSAL	p. 8
PORT DUES ON MOORING AND UNMOORING	p. 10
OTHER SERVICE CHARGES	p. 12
TEMPORARY RENTS OF STORAGE PREMISES	p. 13
OTHER USAGE CHARGES	p. 15
ACCESS CONTROL AT PORT	p. 16

The dues and charges quoted do not include value-added tax (VAT). A VAT in accordance with valid legislation will be added to all dues and charges if the sales in question are subject to VAT by law.

Port of HaminaKotka Ltd can apply prices different from the prices in this price list for significant financial reasons.

The prices will be valid from 1 January 2023. Port of HaminaKotka Ltd charges a 10% higher winter tariff from 1 January to 31 March 2023 and from 15 December to 31 December 2023. The winter tariff is applied to the port dues on goods, vessels, mooring and unmooring, and infrastructure.

PORT DUES ON GOODS

The port dues on goods imported or exported via the Port of HaminaKotka by sea are determined in accordance with the table below. For periods 1 January to 31 March 2023 and 15 December to 31 December 2023, a winter tariff raised by 10 per cent is charged. The winter tariff is applied to the port dues on goods, vessels, mooring and unmooring, and infrastructure. The unit prices raised in accordance with the winter tariff are calculated at an accuracy of three decimal places of the normal unit price.

PRICE CATEGORY		EUR/tonne
	All goods carried through the Port with no specifically mentioned unit price	2.81
26,27,33,34 35,38,39,40,41	Dry bulk (except scrap metal)	1.30
28	Base metals, iron, steel (not works)	1.94
20,21	Wood	0.60/m³
22,24	Wood pulp and building boards	1.55
23	Paper, paper products, cardboard	1.58
36,37,45	Liquid bulk carried in tanker vessels, other products of the chemical industry	2.18
31,32	Oil products	1.47
36.1	Methanol (CN 29.05.11.00)	1.45
32.1	Petroleum gases, including LNG	1.64
	Stuffed containers, trucks and trailers, irrespective of the weight of unit	52.87 EUR/each
	Boats	
	0 – 5,000 kg	86.66 EUR/each
	5,000 – 20,000 kg	173.31 EUR/each
	over 20,000 kg	259.86 EUR/each
	If a boat is stored within the Port area for more than 30 days, the unit price is charged doubled after each interval of 30 days.	
	Cars (CN 87.03)	6.70 EUR/each
	Other vehicles (not work machinery) – 5000 kg	13.41 EUR/each
	Other vehicles (not work machinery) over 5000 kg	16.84 EUR/each

The minimum charge is 25.00 EUR.

2 GENERAL CONDITIONS

- 2.1 The port dues on goods imported or exported via the Port of HaminaKotka by sea shall be paid in accordance with the payment table of these service charges.
- 2.2 Unless there is a separate agreement, the person who has declared the goods for customs clearance, the Finnish owner of the goods, the ship's agent or the shipping company or the party responsible for the goods during transport is obliged to pay the port dues on goods. The party obliged to pay the port dues is also obliged to present to the Port of HaminaKotka Ltd the necessary information for charging the dues.
- The party issuing the terminal advice is responsible for the correctness of the payment information concerning the port dues on goods. A party issuing incorrect information in the terminal advice is charged **25.00** EUR as additional invoicing costs.
- 2.3 The port dues are charged on the basis of gross weight unless otherwise stipulated in the tariff.
- 2.4 If liquid or dry transit bulk goods to be exported arrive on a vessel, the port dues on goods conforming to the tariff are charged upon arrival and half of the port dues on goods conforming to the tariff are charged upon departure, if the stevedoring operator is the one and the same company.
- 2.5 The following goods are exempt from the port dues on goods:
- Passengers' luggage
 - Containers, pallets and other transport bases which are used to facilitate transport and which are not independent merchant goods themselves
 - Fish and other catch caught by fishing vessels and products made from these on the vessels
 - Coastal transfer by the domestic shipbuilding industry
 - Supplies and food purchased for the own use of a vessel; however, not fuel transferred by water and directly from one vessel to another, or other goods.
- 2.6 The port dues shall be paid by the due date indicated on the invoice of Port of HaminaKotka Ltd. A collection charge of **25.00** EUR and a penal interest in accordance with the Finnish Interest Act will be charged for the collection of overdue payments.
- 2.7 If the security level of the Port or a part of the Port needs to be elevated from the normal level (ISPS code level 1) for a reason caused by a consignment (or transport unit used for transporting the goods), the full costs resulting from elevating the security level are charged from that party who is liable to pay the port dues on goods.

RELATIONSHIP BETWEEN DUES TABLES APPLIED BY PORT OF HAMINAKOTKA LTD AND THE CN CODES

Price category	Description	CN code
20	Unsawn timber, wood chips	44.01, 44.03-04
21	Sawn timber	44.06-07, 44.09
22	Chemical pulp, mechanical pulp, waste paper	47
23	Paper, paper products, paperboard	48
24	Plywood, other wood raw materials, boards	44.10-13
25	Other products of the wood-processing industry	44.05, 44.08, 44.14-21
26	Iron ore, concentrate	26.01-02, 26.18-19
27	Other ore, concentrate	26.03-17, 26.20-21
28	Iron, steel, non-precious metals (not products made of these)	72-73.01-07, 74.01-12, 75.01-07, 76.01-09, 78.01-05, 79.01-06, 80.01-06, 81.04
28.1	Other metals, metal alloys	73.08-26, 74.13-19, 75.08, 76.10-16, 78.06, 79.07, 80.07, 81.01-03, 81.05-13
29	Machines, equipment, transport equipment (not vessels)	84-86, 87.12-16, 88, 90-93
29.1	Motor vehicles	87.01-11
30	Other metal products	82, 83
31	Crude petroleum	27.09
32	Petroleum derivatives	27.10-15
33	Mineral coal, coke	27.01-02, 27.04
34	Fuel peat	27.03
35	Fertilizers, soda	25.10, 28.36, 31
36	Coal chemicals, tar	27.05-08, 29
36.1	Methanol	29.05.11.00
37	Other products of the chemical industry	28, 30, 32-38, 39.01-14, 22.07
38	Raw minerals	25.01-09, 25.11-21, 25.24-30
39	Cement, lime, industrially-produced mineral products	25.22-23, 68, 69.01-03
40	Cereals	10
41	Sugar-beet	12.12
42	Fresh, dried, frozen and preserved fruit, vegetables, potatoes	7, 8
43	Live animals	1
44	Foodstuffs, animal fodder	2-4, 9, 11, 12.13-14, 16-24
45	Oil plants, vegetable oils, animal fats	12.01-11, 15
46	Textile raw materials, hides, rubber	5, 13, 14, 40.01-06, 41, 50.01-03 51.01-05, 52.01-03, 53.01-05, 55.01-07
47	Leather, textiles, clothing	42, 43, 50.04-07, 51.06-13, 52.04-12, 53.06-11, 54, 55.08-16, 56-67
48	Glass, ceramic products	69.04-14, 70
49	Other industrial products	39.15-26, 40.07-17, 44.02, 45, 46, 49, 94-96
50	Unitemised general cargo	
51	Miscellaneous articles	6, 71, 97
56	Vehicles, aircraft, vessels and associated transport equipment	89

PORT DUES ON VESSELS

For a vessel practicing mercantile shipping and arriving at the Port area in Hamina or Kotka, as specified in the port regulations, the following dues on vessels are charged:
(For periods 1 January to 31 March 2023 and 15 December to 31 December 2023, a winter tariff raised by 10 per cent is charged. The winter tariff is applied to the port dues on goods, vessels, mooring and unmooring, and infrastructure. The unit prices raised in accordance with the winter tariff are calculated at an accuracy of three decimal places of the normal unit price.)

1 CARGO VESSELS

EUR

Cargo vessels are charged for each unit of net tonnage
The minimum charge is **0.64**
257.00

2 PASSENGER VESSELS

EUR

2.1 Cruise passenger traffic pricing according to agreement
The minimum charge is **257.00**

Cruise vessel call cancellation policy for cruise lines:

The cruise vessel call can be cancelled free of charge 21 days before the booked arrival.
In case the cancellation of the cruise vessel call is made after this, the Port due according to the agreement will be charged.

2.2 Passenger vessels taking on or discharging passengers but not maintaining regular traffic at the Port of HaminaKotka are charged in accordance with section 1 Cargo vessels.

2.3 Passenger vessels which, in accordance with a generally announced timetable and primarily carrying passengers, maintain regular traffic at the Port of HaminaKotka for at least three months are granted a 40 per cent reduction on the port dues on vessels stated in item 1.

The minimum charge is **155.00**

3 OTHER VESSELS

EUR

The following port dues on vessels, based on the maximum length, are collected from vessels other than cargo or passenger vessels occasionally calling at the Port area:

- less than 15 m long **71.00**
- 15–30 m long **140.00**
- more than 30 m long **209.00**

The port dues on a tug-barge combination are charged for the barge on the basis of its net capacity.

4 VESSELS BUILT OR REPAIRED AT A SHIPYARD

The port dues on vessels are agreed separately in each individual case.

5 CALLS FOR MAINTENANCE ETC.

EUR

Vessels calling at the Port for maintenance or to change crews without taking on or leaving any cargo are charged 40 per cent of the port dues specified under item 1.

The minimum charge is

168.00

6 GENERAL CONDITIONS

- 6.1 If the port dues on vessels are to be determined on the basis of net tonnage, the dues are calculated according to the net register tonnage stated on the vessel's certificate without taking the decimals into account.
- 6.2 If the net register tonnage changes while the vessel is at the Port, the greatest net tonnage used will be used in the determination of port dues on vessels.
- 6.3 In order to verify the basis of port dues, the master of the vessel or the ship's agent is obliged to give the appropriate notifications required by the Port Regulations.
- 6.4 The port dues on vessels entitle a vessel to stay in the Port area for a continuous period of 14 days unless otherwise agreed. During the said period of time, the fee includes the right to one transfer between different parts of the Port.
- 6.5 Vessels which keep the Port of HaminaKotka as their base (trawlers, tugs, water buses, passenger vessels in domestic traffic etc.) and pleasure boats are charged the port dues on vessels in accordance with a quay charge agreed separately.
- 6.6 A waste disposal charge in accordance with a separate price list is charged for the waste management services for the vessel.
- 6.7 The port dues on dismantled vessels or vessels used for storage purposes are agreed upon separately between the shipping company and Port of HaminaKotka Ltd.
- 6.8 A collection charge of **25.00** EUR and a penal interest in accordance with the Finnish Interest Act will be charged for the collection of overdue payments.
- 6.9 If the security level of the Port or a part of the Port needs to be elevated from the normal level (ISPS code level 1) for a reason caused by a vessel, the full costs resulting from elevating the security level are charged from that party who is liable to pay the port dues on vessels.

PORT DUES ON PASSENGERS

- 1 A passenger vessel shall pay the following passenger fee per each arriving and departing passenger including cruise passenger **1.00 EUR**

2 GENERAL TERMS

- 2.1 If the passenger vessel stays at the Port for accommodation purposes, 50 per cent of the fee specified under item 1 is charged per each passenger (resident) per each commencing day.
- 2.2 The fee is not charged for
- persons who are on board the vessel inspecting or supervising the functioning of its equipment at the order of authorities or for some other appropriate reason
 - children under the age of 12
 - crew members of the vessel or similar persons whose voyage is related to their work (transfer crews)
- 2.3 A collection charge of **25.00 EUR** and a penal interest in accordance with the Finnish Interest Act will be charged for the collection of overdue payments.

PORT DUES ON WASTE DISPOSAL

The following dues are charged for the waste disposal of vessels for each call at the Port:

1 VESSELS CARRYING MAINLY CARGO

EUR

- 1.1 Solid waste
- | | |
|--|---------------|
| Waste disposal charge per each unit of net tonnage of vessel | 0.10 |
| • Minimum charge | 45.00 |
| • Maximum charge | 262.00 |
- 1.2 Oil-containing waste originating from engine room
- | | |
|--|-----------------|
| Waste disposal charge per each unit of net tonnage of vessel | 0.19 |
| • Minimum charge | 226.00 |
| • Maximum charge | 1,573.00 |
- If the pumping time of oil-containing waste is more than 4 hours for a reason attributable to the vessel, the excess pumping time is charged on the basis of the actual costs. The fee includes a maximum of 15 m³ of oil-containing waste originating from the engine room.
- 1.3 Sewage
- | | |
|--|-------------|
| Waste disposal charge per each unit of net tonnage of vessel | 0.04 |
|--|-------------|
- Maximum sewage pumping time 5 hours. Any period in excess of this will be charged based on the costs incurred.

1.4 Other waste

The receiving and treatment of other waste left by a vessel at the Port is subject to a charge based on the costs incurred.

Other waste means for example cargo residues, wash water of cargo spaces, ballast water and waste generated from a sulphur scrubber.

The reception of these waste types will be announced separately if the national regulations are specified further or revised.

2 VESSELS CARRYING MAINLY PASSENGERS

EUR

2.1 Solid waste

Waste disposal charge per each unit of net tonnage of vessel

0.10

• Minimum charge

45.00

• Maximum charge

1310.00

2.2 Oil-containing waste originating from engine room

Waste disposal charge per each unit of net tonnage of vessel

0.19

• Minimum charge

226.00

• Maximum charge

1,573.00

If the pumping time of oil-containing waste is more than 4 hours for a reason attributable to the vessel, the excess pumping time is charged on the basis of the actual costs. The fee includes a maximum of 15 m³ of oil-containing waste originating from the engine room.

2.3 Sewage

Waste disposal charge per each unit of net tonnage of vessel

0.08

Maximum sewage pumping time 5 hours. Any period in excess of this will be charged based on the costs incurred.

2.4 Other waste

The receiving and treatment of other waste left by a vessel at the Port is subject to a charge based on the costs incurred.

Other waste means for example cargo residues, wash water of cargo spaces, ballast water and waste generated from a sulphur scrubber.

The reception of these waste types will be announced separately if the national regulations are specified further or revised.

3 GENERAL CONDITIONS

3.1 The greatest net tonnage of the vessel used by the vessel at the Port is used as the basis for determining the port dues on waste disposal.

3.2 On weekdays between 16.00 and 07.00, from Fridays at 16.00 till the next Monday at 07.00 and on public holidays, the expenses caused by overtime work are charged in addition to the charge specified under item 2. Public holidays are deemed to begin on the day preceding such days at 16.00 and finish on the day following such days at 07.00.

- 3.3 If the personnel of the Port need to transfer waste from a vessel or from the quay to a waste collection point, the vessel is charged in accordance with the hourly rates specified under item Other service charges.
- 3.4 A vessel which leaves at the Port waste originating from the vessel shall submit a waste notification to the Port of this no less than 24 hours before arrival at the Port or immediately after departure from the previous port if the time of travel is less than 24 hours.
- 3.5 Solid waste and dangerous waste shall be sorted and delivered to waste containers located at the reception facilities in accordance with the instructions provided. Costs caused by unsorted waste are charged from the vessel.
- 3.6 No waste disposal charge is collected from vessels which have obtained an exemption order from the Finnish Transport and Communications Agency Traficom concerning the compulsory delivery of waste. If a vessel which is exempt from the waste disposal charge leaves waste at the Port, Port of HaminaKotka Ltd has the right to deliver the waste further for processing/ disposal at the expense of the vessel or shipping company.
- 3.7 Port of HaminaKotka grants a discount of 7% of Port dues on waste disposal for vessel that uses equipment or methods due to which they produce reduced quantities of waste to be left onshore, or manage it in a sustainable and environmentally sound manner.
- The requirements for the discount are either:
1. On-board segregation and ensured delivery to adequate port reception facilities that comply.
 - or:
 2. Reduction of packaging materials such as bulk packaging and avoiding single use plastic. To qualify for the discount, the vessel must present one of the following means of verification: Green Award, ISO 21070, Blue Angel, Green Marine.
- 3.8 A collection charge of **25.00** EUR plus an interest on arrears in accordance with the Finnish Interest Act are charged for the collection of overdue payments.

PORT DUES ON MOORING AND UNMOORING

The following charges are charged for the mooring and unmooring of vessels:
 (For periods 1 January to 31 March 2023 and 15 December to 31 December 2023, a winter tariff raised by 10 per cent is charged. The winter tariff is applied to the port dues on goods, vessels, mooring and unmooring, and infrastructure. The unit prices raised in accordance with the winter tariff are calculated at an accuracy of three decimal places of the normal unit price.)

1 MOORING OR UNMOORING			EUR
Net tonnage of vessel	0	– 2000	204.00
	2001	– 4000	296.00
	4001	– 6000	377.00
	6001	– 8000	448.00
	8001	– over	528.00

On weekday nights from Monday 23.00 to Saturday 06.00, a working hour addition of 25% is added to the basic charge. On nights from Saturday 23.00 to Monday 06.00 and on public holidays, a working hour addition of 50% is added to the basic charge.

2 WAITING TIME AND OVERTIME COMPENSATION

EUR

If the mooring/unmooring work has been ordered for a specific time but the work does not begin within 30 minutes, the charge for each commencing waiting hour is:

134.00

If those on duty do not have time to execute all ordered moorings/unmoorings and the vessel is not willing to wait, the overtime compensation per each person called to do overtime work

per each commencing hour is
and in travel expenses

85.00

58.00

3 INFRASTRUCTURE CHARGE FOR PROVIDER OF MOORING AND UNMOORING SERVICE

In accordance with the EU Port Services Regulation and the minimum requirements drawn up by Port of HaminaKotka Ltd, an infrastructure charge is charged from an approved service provider operating within the area of the Port of HaminaKotka in accordance with the table below for each mooring and unmooring event.

Net tonnage of vessel	Total number of mooring and unmooring events per year:		
	0–1000	1001– 3000	3001 or more
0–2000	49€ each	40€ each	34€ each
2001–4000	89€ each	74€ each	61€ each
4001–6000	123€ each	100€ each	84€ each
6001–8000	146€ each	120€ each	99€ each
8001 or more	173€ each	141€ each	118€ each

4 GENERAL CONDITIONS

- 4.1 The greatest net tonnage of the vessel used by the vessel at the Port is used as the basis for determining the port dues on mooring and unmooring.
- 4.2 Vessels owned by the government of Finland not serving as merchant vessels are exempt from the port dues on mooring and unmooring.
- 4.3 The charge is charged separately for mooring and unmooring in connection with the transfer of a vessel. A 50 per cent reduction from the above charge is given to the transfer of a vessel at the same quay, if the vessel uses its own engine power for the transfer. If the agent of the vessel changes during the transfer, the reduced charge is distributed between the agents.
- 4.4 If the unmooring is cancelled, but the cancellation has not been reported before those working in the work shift have arrived at the quay at the ordered time, half of the unmooring charge will be charged.
- 4.5 A collection charge of **25.00** EUR and a penal interest in accordance with the Finnish Interest Act will be charged for the collection of overdue payments.

OTHER SERVICE CHARGES

1 TIMEWORK

EUR/h/person

Hourly rates used in repair and other work carried out by Port of HaminaKotka Ltd:

Basic hourly charge	50.00
- overtime 50%	75.00
- overtime 100%	99.00
- overtime 150%	125.00
- overtime 200%	149.00

Supervision and expert service as well as official documents

Basic hourly charge	73.00
- overtime 50%	108.00
- overtime 100%	145.00
- overtime 150%	181.00
- overtime 200%	218.00

2 PROCESSING CHARGE

Port of HaminaKotka Ltd may charge a processing charge for expenses that are invoiced to further sources. The amount of the processing charge is **25.00 EUR** per invoice.

3 UNIT PRICE LIST FOR RAIL WORK

EUR/h

• Supervision	73.00
• Worker	50.00
• Tractor excavator Lännen 8800K	90.00
• Multi-purpose machine Lundberg 6300	89.00

The hourly rent for machinery includes the operator.

4 WEIGHING

EUR

Weighing event using the weighbridge at Mussalo:	17.00/event
Tare + gross weighing using the weighbridge at Mussalo:	26.00/event
One-off axle weighing using the weighbridge at Mussalo:	17.00/event
Tare + gross axle weighing using the weighbridge at Mussalo:	26.00/event

4.2 GENERAL CONDITIONS

- 4.2.1 Any overtime costs or other costs caused by the use of the weighbridge are charged separately.
- 4.2.2 An automatic customer-specific usage agreement can be concluded on the use of the weighbridge. In this case, the maximum invoicing period is one month.
- 4.2.3 A collection charge of **25.00 EUR** and a penal interest in accordance with the Finnish Interest Act will be charged for the collection of overdue payments.
- 4.2.4 Port of HaminaKotka Ltd is not responsible for the consequences of an incorrect weighing result.

TEMPORARY RENTS OF STORAGE PREMISES

1 ASPHALTED AREAS

EUR

• 2–15 days	per square metre per day	0.10
• 16–30 days	per square metre per day	0.11
• from the 31 st day onwards	per square metre per day	0.14

2 DANGEROUS SUBSTANCES

Port operators that take care of the storage of dangerous substances in the port area charge a fee for the service in accordance with their own price lists.

The use of the warehouse of HaminaKotka Port Ltd for dangerous substances is priced individually in each case.

3 EXCHANGE AREAS FOR LARGE TRANSPORT UNITS

EUR

Areas intended for the transfer of large units between operators

Containers and flats EUR/TEU/day

- The date of arrival and the next day are free of charge
- Day 3 and beyond

57.00

When calculating the charge-free days, weekends and midweek holidays are not taken into account.

In the period subject to a charge, the charge is charged for each storage day.

4 OTHER AREAS

EUR

• 2–15 days	per square metre per day	0.07
• 16–30 days	per square metre per day	0.09
• from the 31 st day onwards	per square metre per day	0.11

5 OTHER CHARGING CRITERIA

EUR

Containers and flats EUR/TEU/day

- 1–7 days
- 8–14 days
- more than 14 days

5.67
11.45
17.00

Storage exceeding 21 days shall be agreed upon separately

6 GENERAL CONDITIONS

- 6.1 The minimum charge is **25.00** EUR.
- 6.2 Short-term renting shall always be agreed upon with Port of HaminaKotka Ltd before storing the goods.
- 6.3 Potentially available temporary storage fields can be inquired from the representatives of Port of HaminaKotka Ltd.
- 6.4 Goods stored at storage areas shall be marked clearly with the forwarder's name or symbol. Any unshipped goods shall be transferred to a location shown by the Port.
- 6.5 The charge is for full days, and the charge is applied from the morning of the day following the day on which the area was taken into use or reserved for a particular purpose, unless otherwise stated in the service charges.
- 6.6 The use of exchange areas is subject to separate regulations.
- 6.7 A collection charge of **25.00** EUR and a penal interest in accordance with the Finnish Interest Act will be charged for the collection of overdue payments.

OTHER USAGE CHARGES

1 WATER CHARGE

EUR

Charge for water supplied to vessels:

Water charge	6.16/m³
Minimum charge	58.00

If the vessel wants water supply as overtime work, an overtime work charge in accordance with the service charges is charged for it. Fresh water ordered with a notice of less than 6 hours is subject to a 100 per cent surcharge.

2 TEMPORARY ELECTRICITY

Temporary electricity is supplied in accordance with a separate agreement to be signed with Port of HaminaKotka Ltd. The electricity supply connection is intended for temporary repairs or maintenance.

Establishment and cost of temporary electricity are agreed separately in each individual case. The charge for energy consumed is **0.50** EUR/kWh. Minimum charge **100.00** EUR.

3 CLEANING CHARGE

An enterprise engaged in cargo handling is liable to clean all debris created by its operations and remove the waste created. Cleaning shall be performed without delay, considering other traffic and quay conditions. If Port of HaminaKotka Ltd is caused cleaning cost, it has a right to invoice the actual costs further to the enterprise which has operated the cargo.

4 RAIL CHARGE

The railway network can be operated by all rail operators who have concluded a railway network agreement with Port of HaminaKotka Ltd.

More detailed conditions in the description of service facility on the website of Port of HaminaKotka Ltd:

haminakotka.com > [Instructions](#) > [General instructions](#) > [Port of HaminaKotka Ltd description of service facility, scheduling period 2023 \(doc\)](#).

No rail charges are charged on the railway network.

ACCESS CONTROL AT PORT

1 GATE SERVICES

Vehicle identification (RFID tag)

47.00 EUR/each
(The price includes VAT)

Event image service available in Hamina

31.00 EUR/event

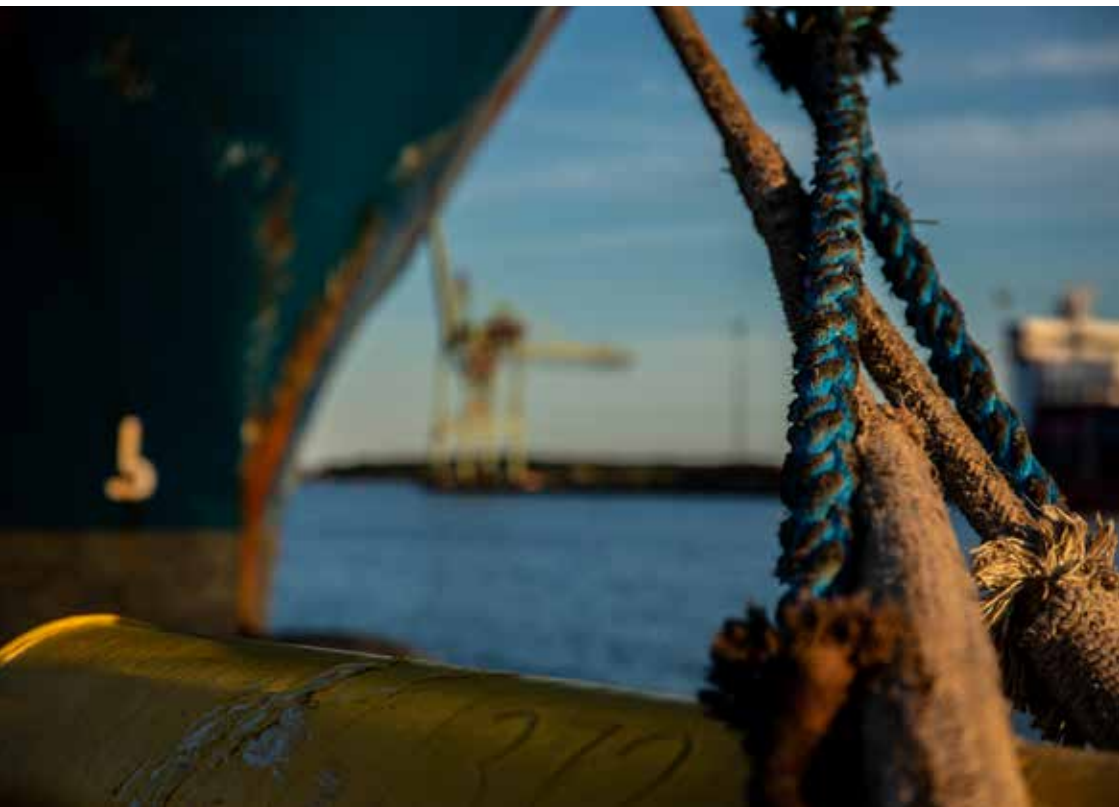
The vehicle goes through the photography portal in one direction so that the vehicle and load are photographed.

2 GENERAL CONDITIONS OF ACCESS CONTROL

- 2.1 By virtue of valid legislation, the Port area is covered by access control, and moving within the Port area requires an access pass. Access control concerns all traffic entering or leaving the port area. Decree of the Ministry of the Interior 480/2018.
- 2.2 The access control system of Port of HaminaKotka Ltd is integrated with a feature for cargo management, and companies operating within the Port area can utilise its features.
- 2.3 Port of HaminaKotka Ltd maintains and develops the access control system.
- 2.4 The access control system is decentralised, i.e. a company operating within the Port area may agree with Port of HaminaKotka Ltd on an option to forwards access pass information directly via its own user interface to the access control system. The company or the party granting an access pass is always responsible for the correctness of access pass information and for keeping this information up to date in the system.
- 2.5 The access pass granted for the Port area is always vehicle-specific or person- specific. The access right is based either on a registration plate identification or electronic RFID identification (so-called tag), which is always subject to a fee. It is prohibited to give the electronic identification to an outsider.
- 2.6 Within the Port area, the holder of the access pass is responsible for passengers arriving in the car driven by him/her.
- 2.7 Persons wishing to access the Port need to be able to prove their identity and give a reason for visiting the Port.
- 2.8 Port of HaminaKotka Ltd has the right to cancel an access pass until further notice or for a fixed period if the access pass is misused or if the holder of the access pass violates the restrictions and regulations applied within the Port area.
- 2.9 The numbers of access passes recorded by the gate control room are monitored on a company-specific basis, and a company can be invoiced for the drawing up of access passes.
If the number of access passes recorded for a company by the gate control room exceeds 30 passes per month, **10.00** EUR per registration number is charged for the recorded access passes.
- 2.10 The repair costs for damage inflicted on the access control and security system are invoiced in full to the party causing the damage. Moreover, the party causing the damage is charged the costs related to the examination of the damage.



PORT OF
HAMINAKOTKA



Port of HaminaKotka Ltd
Merituulentie 424, C43
48310 Kotka, Finland
Tel. +358 20 790 8800
laskutus@haminakotka.fi
haminakotka.com